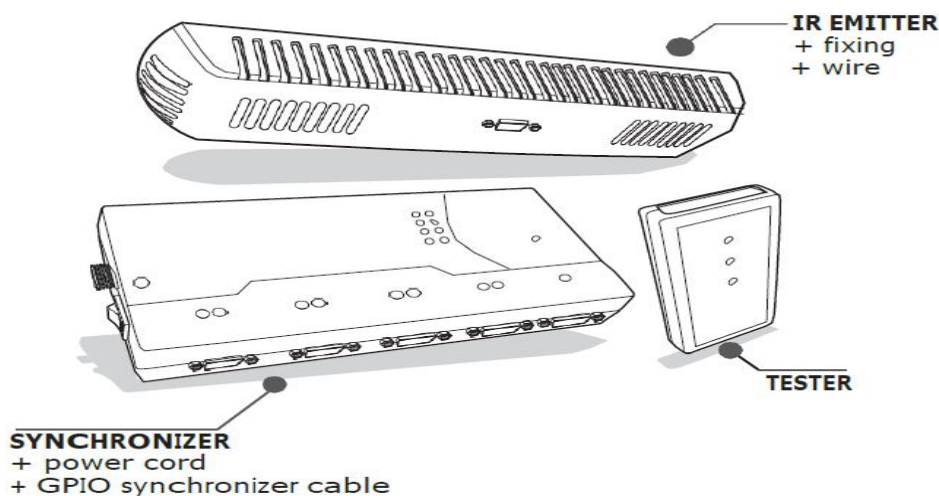


ACTIVHUB CINEMA

BY VOLFONI

User Manual



Model : VPES-01000

Document : MUV120135-B00 ActivHub_Cinema_User_Manual

Compatible with EDGE1.2 glasses (VPEG-01100)

SUMMARY

I. PRESENTATION

1. General presentation
2. Composition

II. PRODUCT DESCRIPTION

1. IR emitter
2. Tester
3. Synchronizer

III. FASTENING

IV. CONNECTION & SYNCHRONIZATION

V. WARRANTY

VI. REGULATORY STANDARDS

VII. CONTACTS

1. GENERAL PRESENTATION

The ActivHub Cinema kit allows easy integration in less than 30 min with existing digital theaters using a standard screen

The system is compatible with EDGE1.2 glasses provided by Volfoni.

The complete system includes following parts :

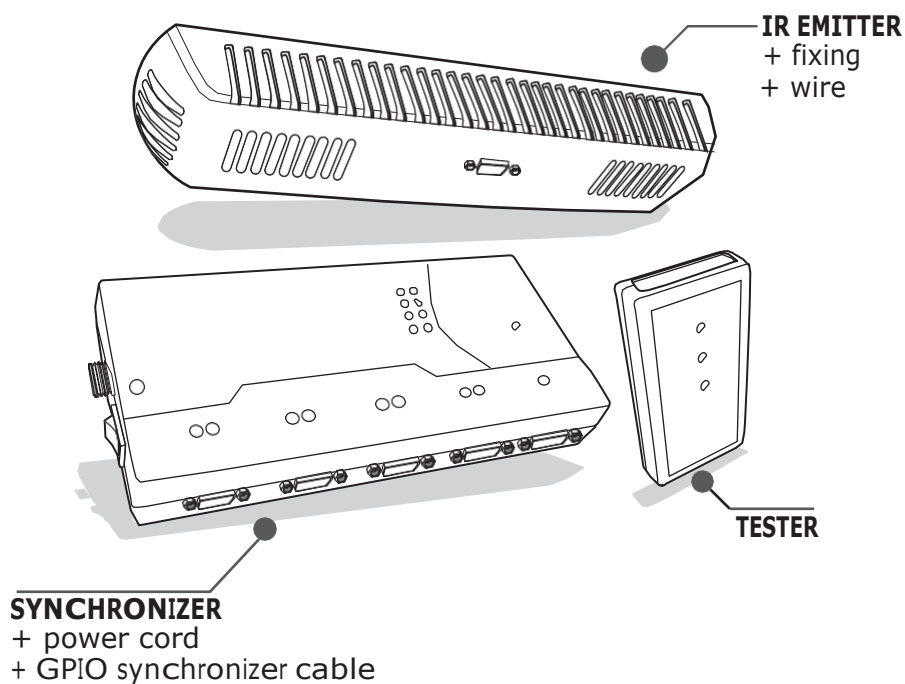
- ActivHub Cinema (1 synchronizer + 2 IR emitters)
- 1 SUB-D37/SUB-D9 cable
- 2 SUB-D9/SUB-D9 cables
- 2 Universal mount fastening
- 1 Power supply adapter
- 1 Power supply cable
- 1 Activ 3D glasses tester with 3 batteries
- 1 User guide

Systems are provided with a new universal mount making installation even faster (installation process is the same as described in section III) :



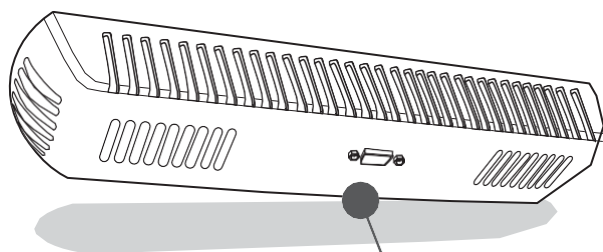
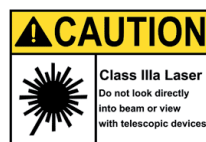
I. PRESENTATION

2. COMPOSITION



Thank you for using our STANDARD ACTIVE 3D DIGITAL CINEMA SYSTEM.
Before starting, please check if the following parts are included in the package.

1. IR EMITTER

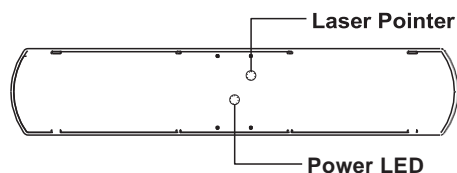
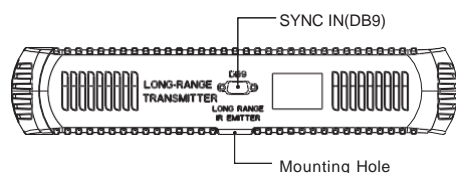


Long Range IR Emitter

Long Range IR Emitter VAIK-0100 is a compact and powerful unit. The emitter, with many built-in infrared LEDs, allows coverage all types of theater rooms, regardless of the number of seats. 4 emitters can be linked up. Thanks to its lightweight design, VAIK-0100 enhances the heat dissipation (LED life protection). It is provided with a universal mounting head for security, and is easy to install. It is simple to target the screen with the emitter laser pointer.

Please do not put the emitter in front of the audience.

Emitter at a Glance



II. PRODUCT DESCRIPTION

Basic Specification

IR Wavelength: 940 nm

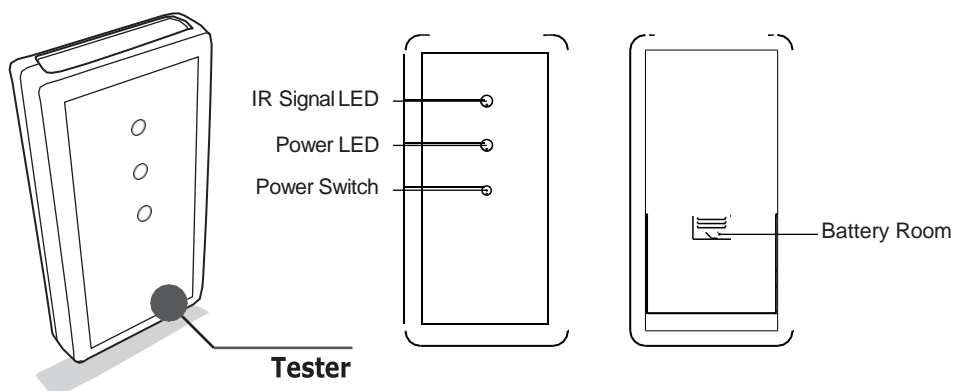
Power Consumption: 10W in active status

Laser: Max Output: 0.5mW, Wavelength: 650 nm \pm 10

Dimension: 361 mm x 70 mm x 44 mm

WARNING: The laser pointer of this emitter emits Class IIIA laser. Please DO NOT stare into beam or view directly with optical instruments.

2. TESTER

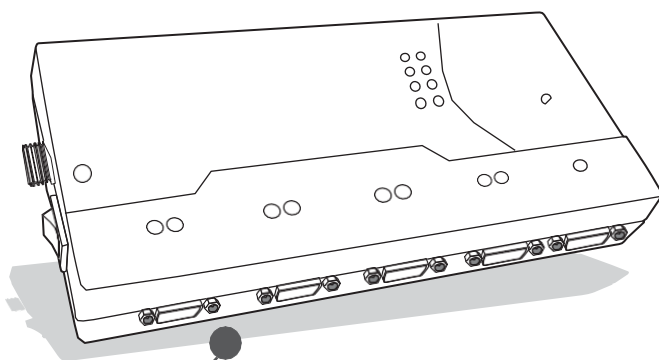


Active 3D Glasses VAIK-0300 is a handy unit to be carried by a cinema technician to check performance of 3D glasses. Turn on the power, then the tester emits low rate IR signal to activate 3D glasses. Working 3D glasses will then show a flickering.

Additional Specification

Power supply: 3xAA batteries

3. SYNCHRONIZER

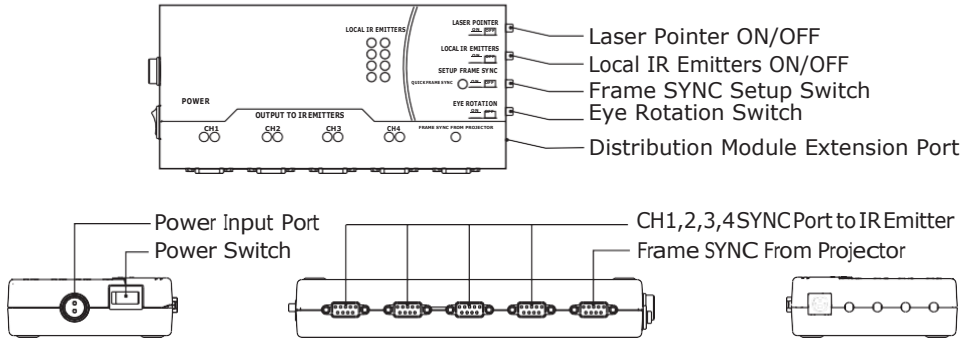


Power Module

Multi-function Distribution Module

The multi-function Distribution Module is a unit specially designed for mid size and large digital 3D cinemas. This unit is plugged into the digital projector and receives frame synchronizing signal via GPIO (DB-37). It extends to four DB-9 emitter outputs. It also supports the extension of the Distribution Module thanks to a DIN-3 cable, that simplifies cinema wiring. Each port is equipped with an error diagnosis indicating LED.

II. PRODUCT DESCRIPTION



Switch Function Description:

LASER POINTER: ON/OFF switch for each emitter laser / If synchronization cable connected to synchronizer and if a signal is detected, laser pointer do not work

LOCAL IR EMITTERS: N/A

SETUP FRAME SYNC: Switch on to detect frame synchronizing range

EYE INVERSION: Switch left/right eye image

POWER: Turn ON/OFF the power of the Distribution Module

Indication LED status definition:

POWER: LED lights come on (fixed red) when power is on, otherwise light is out

Channels 1/2/3/4 : Off if emitter not connected / Fixed green when emitter connected and signal from projector detected by synchronizer

LEDs from emitters: fixed red when emitter connected to synchronizer

SETUP FRAME SYNC: Off in 2D mode / Fixed or blinking green depending on 3D mode settings from projector

FRAME SYNC FROM PROJECTOR: LED light on (fixed or green blinking) when signal from projector is detected by synchronizer

Basic Specification:

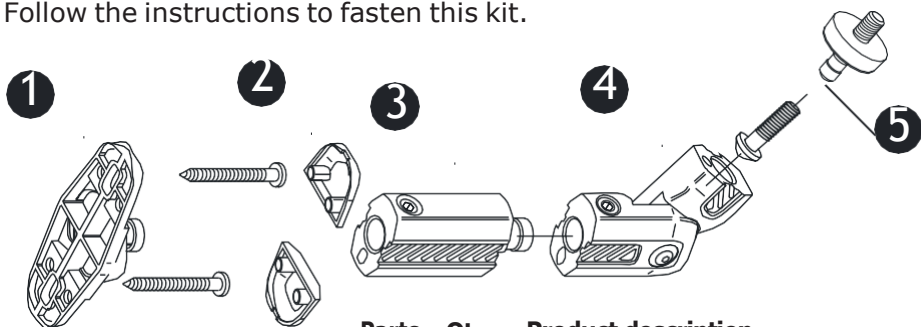
Power Input: 24VDC, 3A

Default Sync In: PIN9 (+) and PIN28 (-) of GPIO(DB-37)

Dimension: 106 mm x 36 mm x 23 mm

WALL FASTENER

Before installing the emitter in the front of the screen, make sure you have all the needed tools and the instruction manual. This wall fixing part is provided with all the screws and wall anchors you might need. Follow the instructions to fasten this kit.



Parts	Qty	Product description
1	2	Mounting plate
2	2	Screw covers
3	1	Extension
4	1	Adjusting Knuckle
5	1	Emitter plate

Wall types and holes sizes

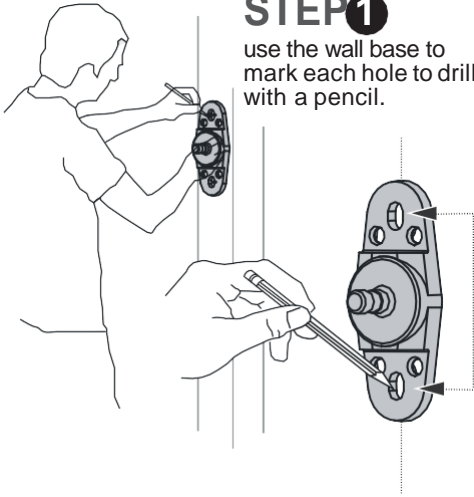
1/2" drywall	wood stud	solid concrete
<p>NOT INCLUDED</p> <p>6.35 mm (1/4")</p> <p>13 mm (1/2")</p>	<p>NOT INCLUDED</p> <p>2.5 mm (3/32")</p> <p>32 mm (1 1/4")</p>	<p>NOT INCLUDED</p> <p>4.7 mm (3/32")</p> <p>44 mm (1 3/4")</p>

III. FASTENING

INSTALLATION

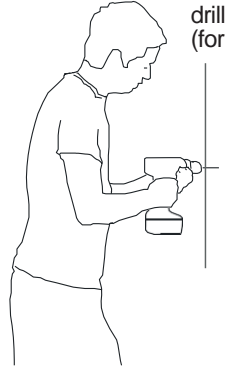
STEP 1

use the wall base to mark each hole to drill with a pencil.



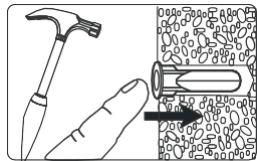
STEP 2

drill the holes with the given bit (for wood surface only)



STEP 3

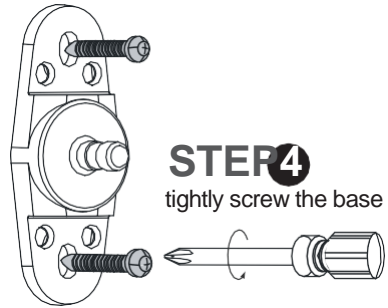
Insert wall anchors



(For solid concrete and drywall only)

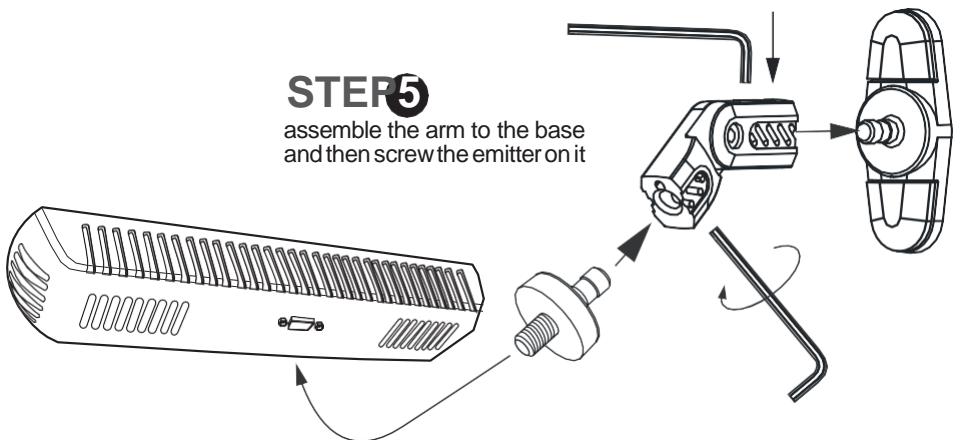
STEP 4

tightly screw the base to the wall



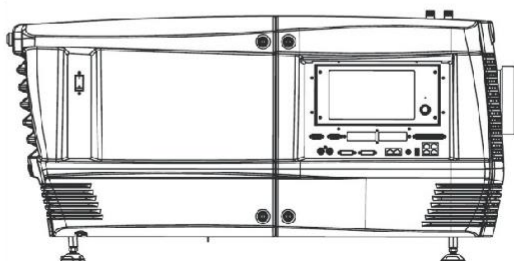
STEP 5

assemble the arm to the base and then screw the emitter on it

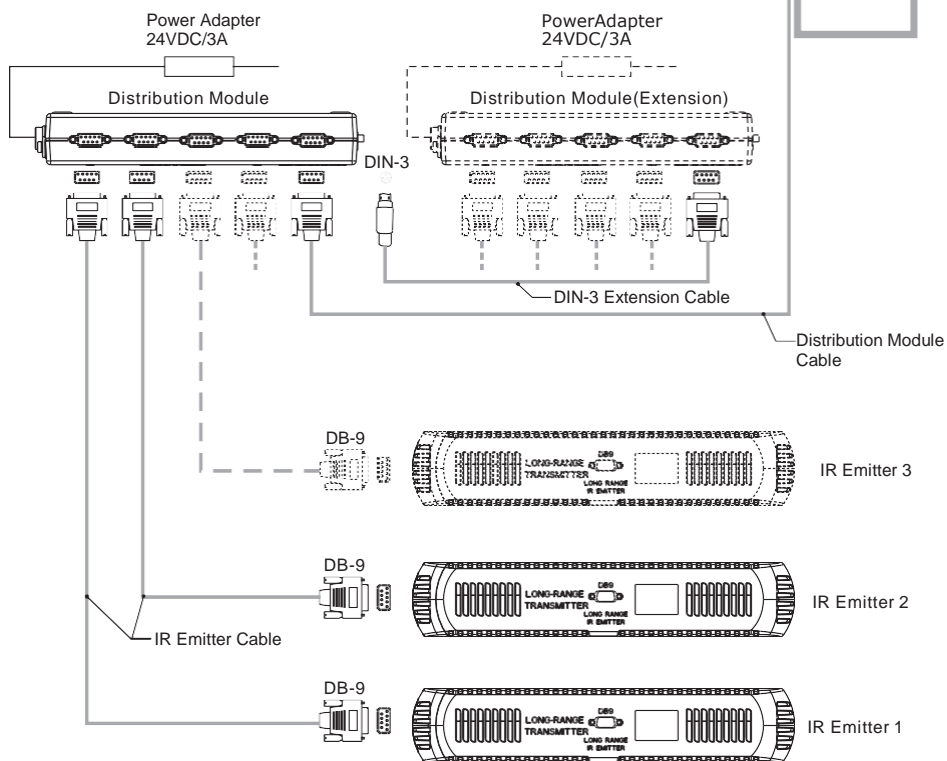
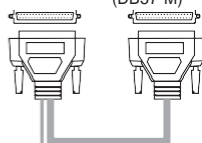


IV.

Digital Projector



GPI/O(DB37-F) GPI/O Extension (DB37-M)



IV. CONNECTION & SYNCHRONIZATION

Please refer to the following technical board for the digital projector. These parameters are for information purpose only. They may be adapted if necessary.

TECHNICAL SPECIFICATIONS	
Fall time	500µs
Rise time	1.5ms
Contrast	> 200 (no ghosting)
Transmission in the clear state	33%
Chromaticity	Color correction not mandatory
Standard parameters	
EDGE™1.2	
Double flash (4.2)	Dark time: 500
	Delay: -320
Triple flash (6.2)	Dark time: 800
	Delay: -320
Weight	56g
Battery	Disposable
Autonomy	800 hours

Warning: Depending on your equipment and the room configuration, you may have to adjust these parameters. We recommend that you confine the setup of 3D parameters and color adjustments directly to integrators.

For further information please visit our website **www.volfoni.com**, or send us an email to **support@volfoni.com**.

V. WARRANTY

The ActivHub Cinema is warrantied to the original purchaser for three years according to local legislation. Infra-red emitters and cables should be returned in original box along with original proof of purchase. Infra-red emitters which are broken or scratched are not covered.

Emitters & Synchronizers : « Volfonì does not cover uninterrupted or error-free operation of the product under warranty ».

VI. REGULATORY STANDARDS

European Union – Disposal Information

According to local laws and regulations your product should be disposed of separately from household waste. When this product reaches its end of life, take it to a collection point designated by local authorities.

Some collection points accept product for free. The separate collection and recycling of your product at the time of disposal will help conserve natural resources and ensure that it is recycled in a manner that protects human health and the environment.

FCC Compliance Statement

This device complies with part 15 of the FCC Rules. Operation is subject to the following two conditions: (1) this device may not cause harmful interference, and (2) this device must accept any interference received, including interferences that may cause undesired operation.

CE Certification

This device complies with CE Certification.

Electrical Safety (IEC 60950-1)

This device complies with IEC 60950-1

VII. CONTACTS

VOLFONI SAS

2474, RD 6007
Le Logis de Bonneau
Les Bureaux du Parc
06270 Villeneuve-Loubet
France

VOLFONI Inc

3450, Cahuenga Bd West.
UNIT 504
Los Angeles, CA, 90068
USA

VOLFONI Iberia

Ronda Guglielmo Marconi, 4
46980 Paterna (Valencia)
Spain

support@volfoni.com
contact@volfoni.com

www.volfoni.com