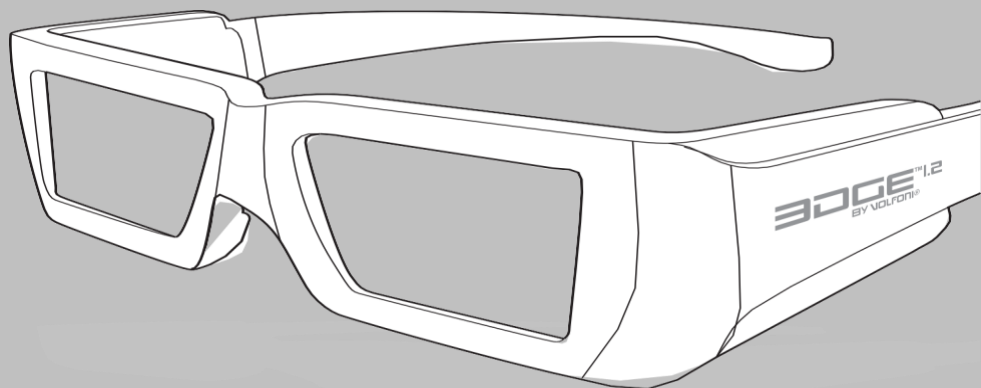


EDGE™ 1.2
BY VOLFONI®

User Manual



VOLFONI
CREATIVE 3D TECHNOLOGY 

Model VPEG-01100

Document : MUV110064-V1R3 Edge1.2_User_Manual

Compatible with ActivHub Cinema (VPES-01000)

Compatible with ActivHub IR100 (VPES-02000-A)

Compatible with ActivHub IR50 (VPES-05000-A)

Compatible with ActivHub IR10 (VPES-03000)

SUMMARY

I. EDGE 1.2 PRESENTATION

1. General presentation
2. Composition

II. PRODUCT DESCRIPTION

1. Glasses
2. Battery Replacement

III. CONNECTION & SYNCHRONIZATION

IV. WARRANTY

V. REGULATORY STANDARDS

VI. CONTACTS



1. GENERAL PRESENTATION

As a result of Volfonì's long experience in managing the world's largest stock of active 3D glasses, EDGE™ 1.2 benefits from the latest ergonomic and technical innovations. EDGE™'s comfort and easy use is unmatched.

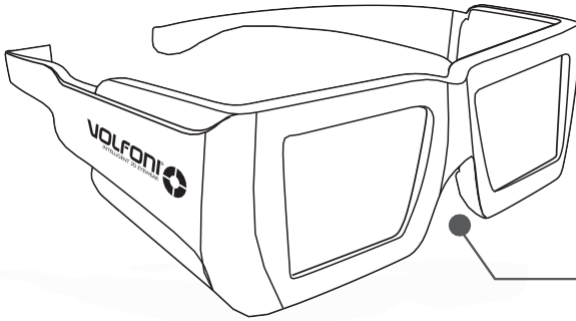
The power of EDGE™ 1.2

- Exceptional image quality without ghosting, wherever you sit.
- The brightest light level on the market.

EDGE™ 1.2 offers all the benefits of active glasses

I. EDGE1.2 PRESENTATION

2. COMPOSITION



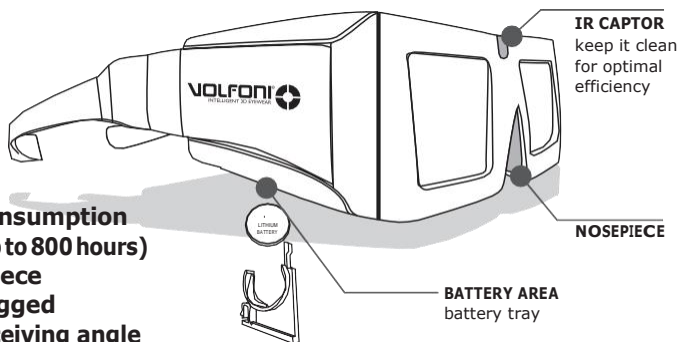
EDGE™ 1.2 GLASSES
+ battery tool
+ removable arms



Operating Temperature: 0°C-40°C (32F-104F)
Storage Temperature: -5°C-50°C (23F-122F)

1. GLASSES

The VOLFONI Active 3D Glasses use fast-response liquid crystal lenses to create the best image quality. It is the brightest and most cost-saving 3D solution currently on the market.



- Low power consumption (battery lasts up to 800 hours)
- Rubber nosepiece
- Stylish and rugged
- Unbeatable receiving angle
- Automatic ON/OFF
- Standard size, replaceable battery
- Adaptively synchronizing
- Optimal circuit layout
- CE certified

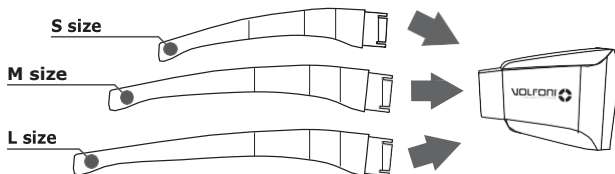
Note: Please, make sure that there is no obstacle in front of the IR captor during 3D projection.

USE AND SETUP

The 3D glasses do not need any setup to start. It is nevertheless necessary to check all settings and connections of the 3D digital cinema system before projection. When started, the lenses need 2 seconds to warm up and turn into working mode. Then the lenses appear clear. When the 3D projection is finished or turned into 2D, the lenses will remain clear for about 5 minutes. They will go directly into operation mode again when a new signal is received.

ARMS

The glasses come with L size arms, and M & S size arms are available upon request. For easy removal, just push in the new arms until you hear the "click".



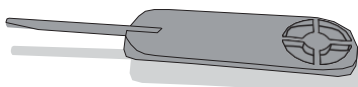
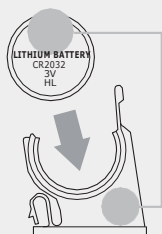
II. PRODUCT DESCRIPTION

2. BATTERY REPLACEMENT

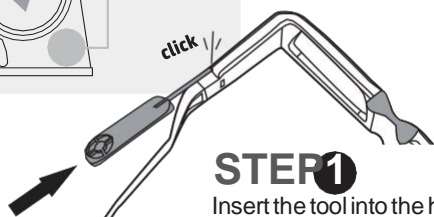
To open the battery encasement on the right arm of the glasses:

- Use an instrument such as the Volfoni's battery tool, a paper clip or a prong.
- Put the glasses on a desk/table as it will be more convenient and easy
- Find the small hole on the right arm of the glasses, where the arm connects with the battery encasement. **1 2**
- Put the prong inside and when you hear a "click," you can open the battery encasement **3**

make sure you install the battery in the right position

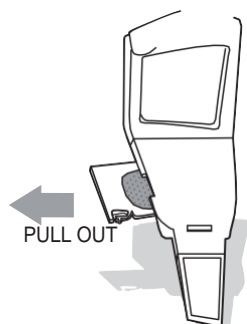


BATTERY TOOL
to unlock the battery



STEP 1

Insert the tool into the hole in the under right side of glasses. You feel some resistance, then push and feel/hear the unlocking "click".

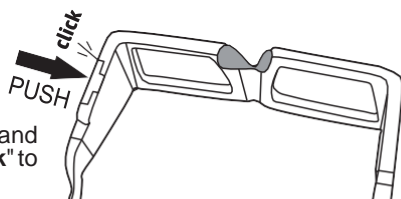


STEP 2

Pull towards you with your nail to remove the battery tray

STEP 3

Reinsert the battery and push to hear the "click" to lock it.



Note: When the battery has less than three hours remaining, the lenses will flash once a second to indicate that you must change the battery. It is recommended to check the battery life before distributing to viewers.

III. CONNECTION & SYNCHRONIZATION

Please refer to the following technical board for the digital projector. These parameters are for information purpose only. They may be adapted if necessary.

TECHNICAL SPECIFICATIONS

Fall time	500µs
Rise time	1.5 ms
Contrast	> 200 (no ghosting)
Transmission in the clear state	33%
Chromaticity <i>Standard parameters</i>	Color correction not mandatory
EDGE™ 1.2	
Double flash (4.2)	Dark time: 500 Delay: -320
Triple flash (6.2)	Dark time: 800 Delay: -320
Weight	56 grs (less than 2 ounces)
Battery	Disposable
Autonomy	800 hours

Warning: *Depending on your equipment and the room configuration, you may have to adjust these parameters. We recommend that you confine the setup of 3D parameters and color adjustments directly to integrators.*

For further information please visit our website www.volfoni.com, or send us an email to support@volfoni.com.

IV. WARRANTY

The EDGE1.2 glasses are warranted to the original purchaser for 1 year according to local legislation. Glasses and cables should be returned in original box along with original proof of purchase. Glasses which are broken or scratched are not covered.

Glasses : « Volfoni does not cover uninterrupted or error-free operation of the product under warranty ».

V. REGULATORY STANDARDS

European Union – Disposal Information

According to local laws and regulations your product should be disposed of separately from household waste. When this product reaches its end of life, take it to a collection point designated by local authorities.

Some collection points accept product for free. The separate collection and recycling of your product at the time of disposal will help conserve natural resources and ensure that it is recycled in a manner that protects human health and the environment.

FCC Compliance Statement

This device complies with part 15 of the FCC Rules. Operation is subject to the following two conditions: (1) this device may not cause harmful interference, and (2) this device must accept any interference received, including interferences that may cause undesired operation.

CE Certification

This device complies with CE Certification.

Electrical Safety (IEC 60950-1)

This device complies with IEC 60950-1

VI. CONTACTS

VOLFONISAS

2474, RD 6007
Le Logis de Bonneau
Les Bureaux du Parc
06270 Villeneuve-Loubet
France

VOLFONI Inc

3450, Cahuenga Bd West.
UNIT 504
Los Angeles, CA, 90068
USA

VOLFONIIberia

Ronda Guglielmo Marconi, 4
46980 Paterna (Valencia)
Spain

support@volfoni.com
contact@volfoni.com

www.volfoni.com