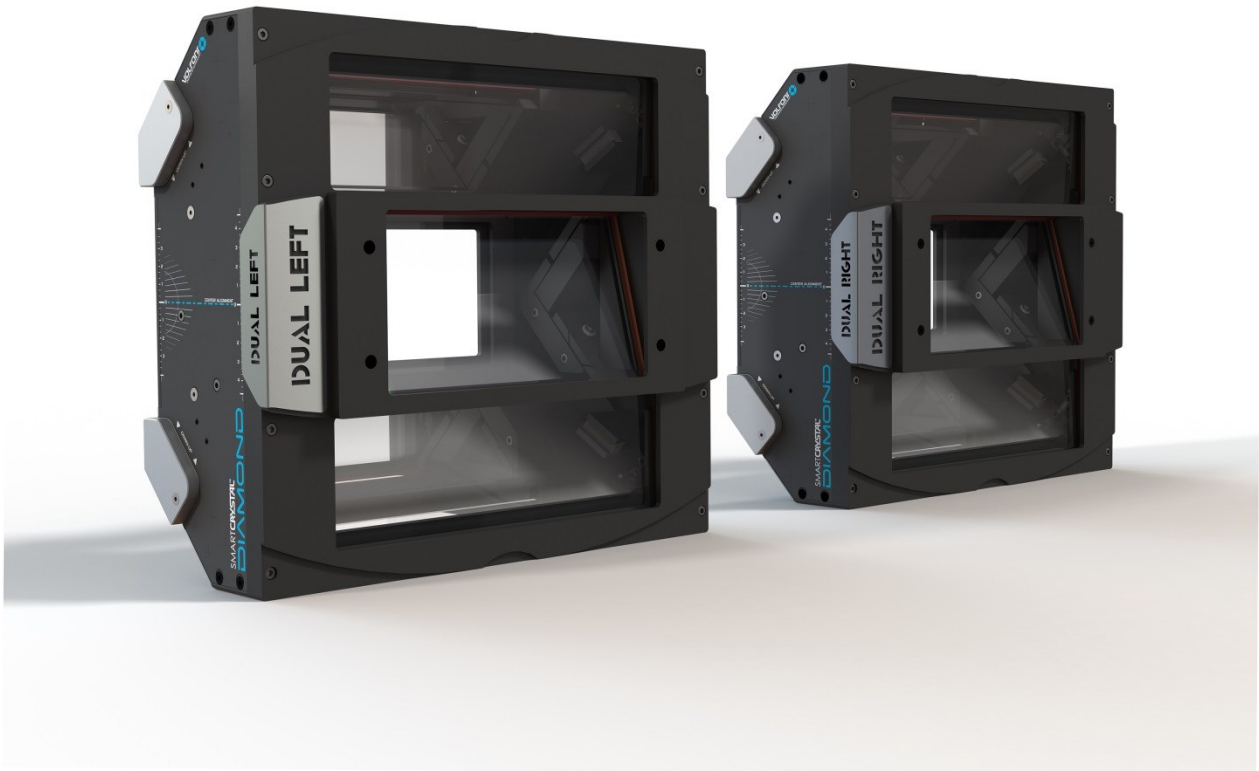
	SmartCrystal™	n ° : MUV1600178
	Diamond Dual	Version : A01
	USER MANUAL	Date : 08/06/2017

SMARTCRYSTAL™ DIAMOND DUAL

User Guide



MODEL: VBSP-13000



	SmartCrystal™	n ° : MUV1600178
	Diamond Dual	Version : A01
	USER MANUAL	Date : 08/06/2017

TABLE OF CONTENTS

I. PRODUCT OVERVIEW -----	3
II. REQUIREMENTS -----	3
III. SMARTCRYSTAL DIAMOND DUAL FEATURES -----	4
1. General specifications -----	4
2. Technical specifications -----	4
3. Electrical specifications -----	4
4. Theoretical brightness performance SmartCrystal Diamond Dual -----	4
IV. INSTALLATION OF THE SMARTCRYSTAL DIAMOND DUAL -----	5
1. Mechanical Installation -----	5
a. Electrical Installation -----	6
V. TROUBLES SHOOTING -----	6
VI. IMPORTANT SAFETY RECOMMENDATIONS -----	6
VII. WARRANTY -----	6
VIII. FURTHER INFORMATION -----	7
IX. REGULATORY STANDARDS -----	7

	SmartCrystal™	n ° : MUV1600178
	Diamond Dual	Version : A01
	USER MANUAL	Date : 08/06/2017

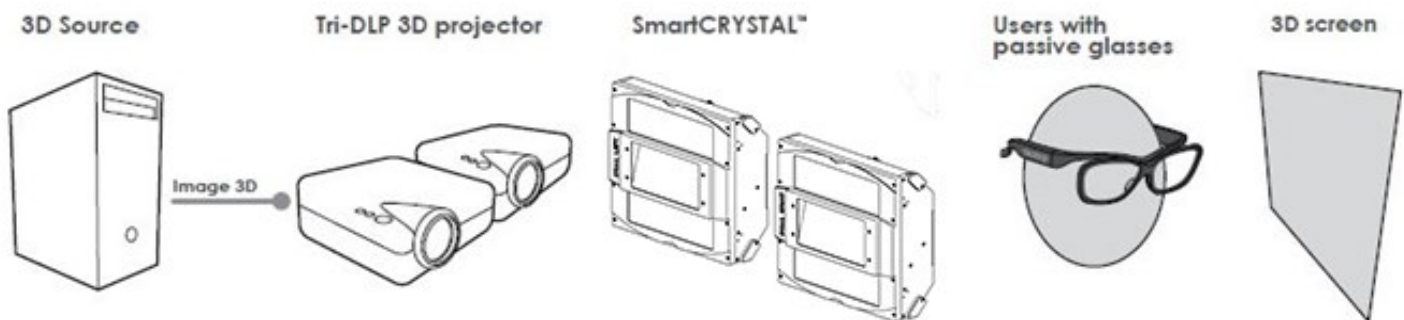
I. PRODUCT OVERVIEW

The SmartCrystal™ Diamond Dual is a complete standalone automatic dual glass polarized filter for dual projection and large format screen

II. REQUIREMENTS

To use the SmartCrystal™ Diamond Dual unit, the following is required:

- 3D content
- 2X3D cinema projector
- Polarization-preserving silver screen
- Passive circular-polarized 3D glasses



Most types of 3D cinema projectors are compatible with the SmartCrystal™ Diamond Dual system.

DLP (Digital Light Processing) projectors are especially efficient for 3D projection. The system is easy to set up with a DCI-compliant DLP projector and works with projector lamps up to 7KW.


Please consult Volfoni for additional information.

Polarization-preserving silver screen

In order to enjoy the best quality 3D images, a polarization-preserving silver screen designed for 3D projection is required. If your screen was not manufactured specifically for 3D use, you might experience uncomfortable and blurry 3D images with a high level of cross-talk.

Passive polarized 3D glasses

The SmartCrystal™ Diamond Dual is compatible with most commonly used passive 3D glasses (circular-polarized only).

	SmartCrystal™	n ° : MUV1600178
	Diamond Dual	Version : A01
	USER MANUAL	Date : 08/06/2017

III. SMARTCRYSTAL DIAMOND DUAL FEATURES

1. General specifications

- Meets all standards for electronics approved by CE
- For use with lightweight circular-polarized passive 3D glasses
- Passive 3D glasses as well as clip-on 3D glasses are available from Volfoni. Please contact us for more details.

2. Technical specifications

- Maximum power of projector: 7 kW
- Power supply: 110V/240V 50/60Hz
- Operating temperature: +10°C to +50°C (50°F to 122°F)
- Storage temperature: -5°C to +50°C (23°F to 122°F)
- Entrance window dimension: 70x100 mm
- Product dimensions (L x W x H): 280 x 260 x 100 mm
- Weight: 5.6kg per units (12.3 lb)


3. Electrical specifications

- V= 240 / 110 V AC
- F = 50 / 60 Hz
- Consumption <40mA AC / 220V (e)
- The unit has a built-in surge protector
- The system is supplied with two different power cables, a European model and an American model.
- This equipment should be electrically grounded.
- To rectify any indicated faults, please contact your dealer, installer stating the model number shown in the silver label of the product.

4. Theoretical brightness performance SmartCrystal Diamond Dual

Maximum power of projector: 7 kW | Power supply: 110V/240V 50/60Hz

		30K lumens (x2)				20K lumens (x2)				15K lumens (x2)			
		6 Ft on the screen		4.5 Ft on the screen		6 Ft on the screen		4.5 Ft on the screen		6 Ft on the screen		4.5 Ft on the screen	
		Feet	Meter	Feet	Meter	Feet	Meter	Feet	Meter	Feet	Meter	Feet	Meter
Aspect ratio (LxH)	Flat (1.85)	114.5x 62	35 x 19	132 x 72	40.2 x 21.8	93.5 x 51	28.5 x 15.5	108 x 58.5	33 x 18	81 x 44	25 x 13.3	93 x 50.5	28.5 x 15.4
	Scope (2.35)	129 x 55	39.30 x 16.7	149 x 63	45.5 x 19.3	105 x 45	32 x 14	122 x 52	37 x 15.7	91 x 39	28 x 12	105 x 45	32 x 13.6

	SmartCrystal™	n ° : MUV1600178
	Diamond Dual	Version : A01
	USER MANUAL	Date : 08/06/2017

IV. INSTALLATION OF THE SMARTCRYSTAL DIAMOND DUAL

1. Mechanical Installation

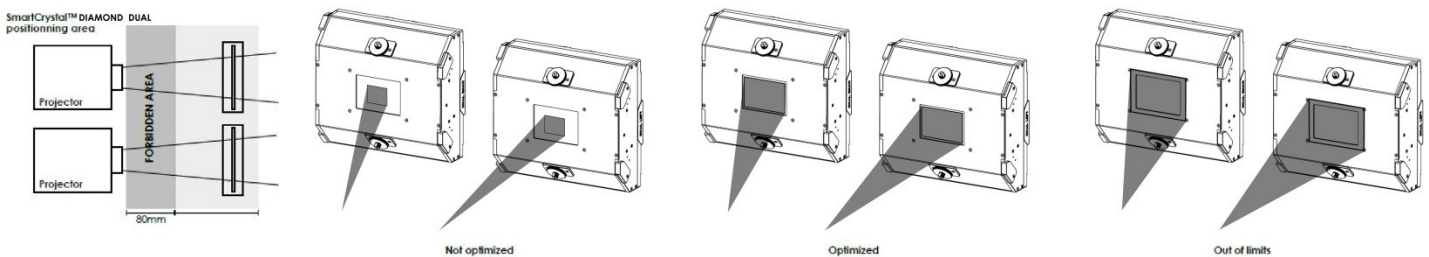
To install properly the SmartCrystal™ Diamond Dual, please refer to the user manual of the SmartCrystal™ Diamond that you can find online.

Document => MUV140036

REMINDER


The SmartCrystal™ Diamond Dual should be placed directly in front of the lens of the projector at a distance such that the image from the projector covers as much as possible the entire area of the entrance window in order to minimize thermal heating effects.

Ensure that the side of the SmartCrystal™ Diamond marked "PROJECTOR SIDE" is facing towards the projector and the polarizer marked with a «RIGHT EYE» is in front of your right projector and the polarizer marked with a «LEFT EYE» is in front of your left projector. The SmartCrystal™ Diamond entrance window must be placed at least 20mm (1 inch) away from the projector lens.



Monitor the distance between the projector and the SmartCrystal™ Cinema Dual as it is very important to preserve the Polarizer

You may tilt the SmartCrystal™ polarization panel at a slightly to avoid scattering light reflection onto the projector lens and to reduce potential ghosting.

	SmartCrystal™	n ° : MUV1600178
	Diamond Dual	Version : A01
	USER MANUAL	Date : 08/06/2017

a. Electrical Installation

As for the mechanical installation please refer to the user manual of the SmartCrystal™ Diamond that you can find online. The only difference is for the SmartCrystal™ Diamond Dual there is no auto mode.

Document => MUV140036

V. TROUBLES SHOOTING

PROBLEM	SOLUTION
The image is blurred	Check that 2D images coil out polarizers are sharp

IF YOU DO NOT NOTICE ANY IMPROVEMENT FURTHER TO THE SUGGESTED SOLUTIONS, PLEASE CONTACT YOUR SUPPORT

VI. IMPORTANT SAFETY RECOMMENDATIONS


Protect all parts of the 3D system from direct sunlight, heat or water.

- Extreme conditions may alter the product's performance.
- Do not modify the electrical or mechanical components of your 3D system.
- Do not apply force to the window of the polarization modulator.
- Do not touch the polarization window.
- Avoid vibrations and shock.
- Use a clean soft cloth when cleaning the polarization modulator to avoid scratching.
- Always transport the SmartCrystal™ Diamond Dual system in its original packaging to avoid scratching the LCDs or the frame.
- In case of damage to the SmartCrystal™ Diamond Dual where the skin is exposed to liquid crystal material, we recommend that you immediately wash the area with soap and water.
- In case of eye exposure to liquid crystal material, please seek medical advice immediately.
- Please note that passive 3D glasses must not be used as sunglasses.

VII. WARRANTY

The SmartCrystal™ Diamond Dual is protected under warranty to the original purchaser for five (5) years according to local legislation.

Equipment (modules and cables) should be returned in their original packaging along with the original proof of purchase. Equipment that is broken or scratched is

	SmartCrystal™	n ° : MUV1600178
	Diamond Dual	Version : A01
	USER MANUAL	Date : 08/06/2017

not covered. Volfoni does not guarantee uninterrupted or error-free operation of the product.

VIII. FURTHER INFORMATION

NOTICE:

The Volfoni Group reserves the right to make changes in the hardware, packaging or other documentation without prior written notice. SmartCrystal™ Diamond Dual is a trademark of the Volfoni Group. All trademarks are the property of their respective companies.

www.volfoni.com

IX. REGULATORY STANDARDS

European Union - Disposal information

This symbol means that according to local laws and regulations your product should be disposed of separately from household waste. When this product reaches the end of its life, take it to a collection point designated by local authorities. Some collection points accept product for free.

The separate collection and recycling of your product at the time of disposal will help conserve natural resources and ensure that it is recycled in a manner that protects human health and the environment.

This Class B digital apparatus complies with Canadian ICES-003.