

SUMMARY

Content	Page
1. PRODUCT OVERVIEW	3.
1.1 DESCRIPTION	3.
1.2 SET-UP OF ARMS	4.
1.3 PACKAGE COMPOSITION	4.
2. EDGE RF FEATURES	4.
2.1 GENERAL SPECIFICATIONS	4.
2.2 TECHNICAL SPECIFICATIONS	4.
3. REQUIREMENT	5.
3.1 ACTIVHUB™ RF50 OVERVIEW	5.
3.2 GENERAL SETUP	5.
4. USING YOUR EDGE RF	6.
4.1 ON/OFF AND AUTO OFF	6.
4.2 SWITCH BUTTON	6.
4.3 BATTERY	6.
4.3.1 BATTERY LEVEL	6.
4.3.2 BATTERY CHARGE	7.
5. SOFTWARE UPDATES	7.
6. VOLFONI - PARAMETERS	8.
7. TROUBLESHOOTING	9.
8. IMPORTANT SAFETY RECOMMENDATIONS	10.
9. WARRANTY	10.
10. REGULATIONS	11.
11. MORE INFORMATION AND CONTACTS	11.



1. PRODUCT OVERVIEW

1.1 Description

EDGE™ RF are active 3D glasses that use radio frequency technology. These glasses synchronize with the RF signal of the ActivHub RF50. As a result of Volfoni's long experience in managing the world's largest stock of active 3D glasses, the EDGE™ line of glasses showcase the latest in 3D technical innovations, with unmatched comfort and ease-of-use.

The quality:

- These glasses use ultra-fast-response liquid crystal lenses, which create the best image quality
- No silver screen required, high image quality preserved at all seating positions
- Bright images and natural colors

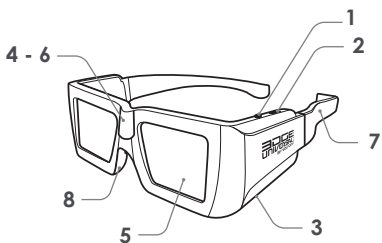
The comfort:

- Volfoni's ergonomic design
- Weighs only 56gr
- Rubberized nosepiece and 3 sizes of adjustable arms

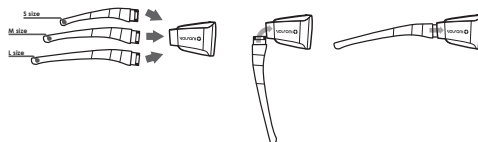
The efficiency:

- Best-in-class lenses with high contrast and light efficiency
- Extremely stable, long-range usage due to radio frequency
- Radio frequency synchronization avoids interference from other devices
- Software programmable 3D glasses (dark time, delay...)
- Automatic power-off function (Auto OFF) saves energy
- Rechargeable glasses / Battery life up to 75 hours
- Three-positions switch : 3D, 3D reverse, dual view

1. ON/OFF button
2. Programmable 3-positions switch
3. MicroUSB (μUSB) connection (recharging and updating)
4. Electronic component (with RF receiver)
5. Liquid crystal lenses (STN)
6. LED light
7. Interchangeable arms
8. Rubberized nosepiece



1.2 set up of arms



1.3 Package composition

- EDGE™ RF (x1)
- MicroUSB cable (x1)
- Removable arms S, M, L (x1)
- User guide (x1)
- Microfiber cleaning wipe (x1)

2. EDGE™ RF FEATURES

2.1 General Specifications

- Stylish, ergonomic design
- Rubber nosepiece provides universal comfort
- Unbeatable luminosity and natural colors
- Wide receiving angle and extremely stable range
- Rechargeable battery (with μUSB/USB cable)
- Optimal circuit layout
- ON/OFF button
- 3 available sizes of removable arms (S, M, L)

2.2 Technical Specifications

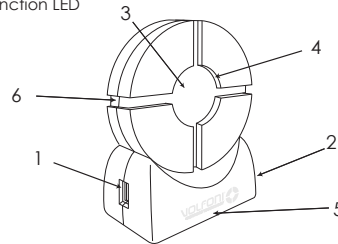
- Sync operation: Radio-Frequency
- Frequency: 2.4Ghz
- Compatible with all refresh-rates up to 220Hz (including 96, 120, 144 and 192Hz)
- Optic Transmission: 38%
- Residual light: 18.5%
- Contrast: > 940:1 (no ghosting)
- Chromaticity: Color correction not mandatory
- Weight: 56 grams
- Autonomy: 75 hours in use, auto OFF
- Range with an ActivHub: 30 meters maximum
- Operating Temperature: 0°C ~ +40°C (32F-104F)
- Storage Temperature: -10°C ~ +50°C (14F-122F)
- CE certified

3. REQUIREMENTS

3.1 ActivHub™ RF50 overview

ActivHub™ RF is a transmitter used to synchronize the EDGE™ RF 3D glasses with protocols currently used.

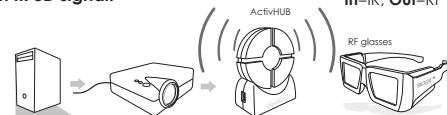
1. USB connector
2. Jack 3.5 connector
3. IR & DLP-Link reception window
4. RF emission window
5. Function selector with the rotary wheel (12 positions) : only for EDGE VR
6. Power and Function LED



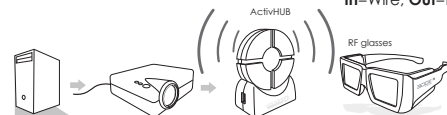
3.2 General setup

- Choose a compatible source: IR, DLP-Link or VESA
- Depending on the type of synchronization used, connect the ActivHub RF as follows :

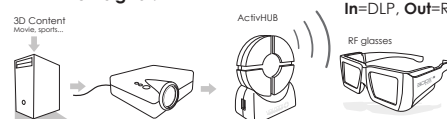
The ActivHub can transmit RF synchronization when receiving an IR 3D signal. In=IR, Out=RF



The ActivHub can transmit RF synchronization when connected to a VESA or BNC cable. In=Wire, Out=RF



The ActivHub can transmit RF synchronization when receiving a DLP-Link 3D signal. In=DLP, Out=RF



- The ActivHub RF has several modes of operation (1,2), selectable with the wheel. The EDGE™ RF works only if the position 8 is selected.

Auto test mode : position 0

Please note that positions 1 and 2 are not meant to be used in the ActivHub RF.

- When the configuration is ready, please stand in front of the screen and press the On / Off button on your glasses.

- The glasses will automatically search the synchronization signal. Once the glasses are synchronized, the LCD lenses will flash ultra-fast. Then you can watch your 3D content.

4. USING YOUR EDGE™ RF

4.1 ON/OFF and Auto OFF

ON :
Turn the glasses ON with a short press of the ON/OFF button. When switched ON, the lenses will alternately flash one time (left and right) to indicate to the user that the glasses are powered ON.
OFF :
Turning the glasses OFF is possible by holding down the ON/OFF button.
The glasses will turn off automatically in the following cases:
- No movement of the glasses after 5 minutes.
- Loss of IR synchronization after 10 minutes.

4.2 Switch button

EDGE™ RF has a switch button with 3 positions (all in 3D mode by default)



4.3 Battery

The EDGE RF battery life is about 75h

4.3.1 Battery Level

When starting up the glasses and with a short press of the button, the glasses will show the level of battery life by the number of flashes of the LED:
- Low level (less than 30%): one flash

6

7. TROUBLESHOOTING

PROBLEM	SOLUTION
The RF signal is not recognized.	Check that your ActivHub is emitting RF. The blue LED on the side of the ActivHub RF will flash 2 times quickly to indicate that it is emitting RF.
The glasses are blinking strongly.	Check that there is no other source using the same RF channel within a range of 30 meters around the ActivHub RF.
The glasses blink when I turn them ON	When this phenomenon occurs, it means that the battery is low. Please recharge the glasses.
The EDGE™ RF glasses are not synchronizing with the ActivHub RF20	Verify that the RF channel selected under the ActivHub RF is set to position "8". Check that your original source is broadcasting 3D.
The EDGE™ RF glasses stay OFF despite the fact that I press the ON/OFF button to turn them ON	Try recharging your glasses. If the problem persists, contact support@volfon.com

9

- Intermediate level (between 30 and 90%): two flashes
- High level (greater than 90%): three flashes

4.3.2 Battery Charge

The battery charging will be indicated by the LED when the USB cable is connected:
- Steady light: charging.
- Off: charging is complete.
It is also possible to see the exact level of your glasses' battery charge by connecting to your computer and using the Volfoni Loader (see section Advanced settings via Volfoni Loader). Once the glasses are recognized, the level bar is displayed.

5. SOFTWARE UPDATES

Before using the EDGE™ RF glasses, make sure you have the latest version of software from our website. For this purpose, please download the « Volfoni Loader » software (<http://www.volfoni.com/en/services-support/download>) and connect your glasses to your computer. Then start the software and follow the instructions below.

- choose the menu "SUPPORT"
- choose "Upgradable Software"
- download the application "VOLFONI LOADER"
- connect your computer to the µUSB connector on the arm of the EDGE™ RF with the USB/µUSB cable
- press and hold the ON/OFF button of the EDGE™ RF during 3 seconds.
- the LED of the EDGE™ RF will light red
- verify that the application recognizes your system
- once you are connected, press the button "Check for updates"
- download the latest version



7

8. IMPORTANT SAFETY RECOMMENDATIONS

-If you are unsure about your vision, take a test to verify your ability to see stereoscopic 3D images.

-Do not sit too close to the screen when watching 3D images.

-Watching 3D may cause discomfort (such as eye strain, altered vision, fatigue, nausea, lightheadedness, dizziness, confusion, loss of awareness, convulsions, cramps and/or disorientation) for some people.

Volfoni recommends that you take regular breaks when watching 3D content or playing 3D video games until the discomfort ends. If the discomfort persists, consult a doctor.

-Certain types of TV images or video games that contain flashing patterns of light may cause epilepsy symptoms for some viewers. If you or any member of your family has a history of epilepsy, Volfoni strongly recommends that you consult a physician before the use of this product.

-Be aware of young children, especially those under six years old. Because their vision is still under development, consult a doctor (such as a pediatrician or eye doctor) before allowing young children to watch 3D. Not for children's use without proper adult supervision.

-If the product is broken, please keep broken pieces away from mouth and eyes. Dispose of pieces responsibly.

-Protect the 3D system from direct sunlight, heat, or water. Extreme conditions may alter the product's abilities.

-Do not drop or modify the electrical or mechanical components of the 3D system.

-Do not apply force to the product.

-Do not leave the ActivHub turned ON due to Radio-Frequency.

9. WARRANTY

Volfoni Group reserves the right to make changes in the hardware, packaging or other documentation without prior written notice. The EDGE™ RF glasses are a trademark of Volfoni Group. All trademarks are the property of their respective companies.

The EDGE™ RF are warrantied. Please refer to your order form to be aware of the warrantee terms.

The system should be returned in its original box with original proof of purchase. Volfoni does not warrant uninterrupted or error-free operation of the product.

10

6. VOLFONI LOADER - PARAMETERS

You can access to this part by clicking on "parameter" in the menu "edit"

3D Switch :

- 3D on all positions : In this configuration the glasses will receive a normal 3d sync whatever the switch position
- 3D Reverse : In this configuration the glasses will receive a reverse 3d sync whatever the switch position
- Shared screen : In this configuration
Switch in front position : 3D
Switch in middle position : 2D left
Switch in back position : 2D right

Dark Time : allows you to change the value of DarkTime. The slider allows you to adjust the value between -4000 microseconds (better luminosity) and 4000 microseconds (better contrast). The value applied is inscribed above the slider (0 in this example)

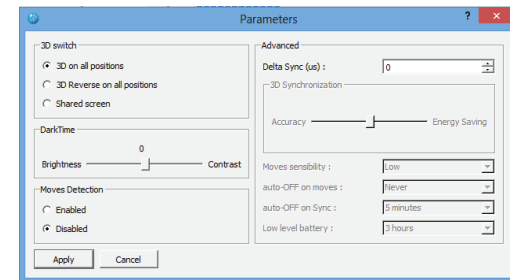
Moves Detection :

Enables or disables the Auto OFF feature when glasses are not moving
Enabled: The glasses turn OFF automatically if no movement is detected after 5 minutes (AUTO OFF enabled).
Disabled: The glasses will stay on even if no motion is detected.(AUTO OFF function disabled).

Advanced :

- Delta Sync (µs) : Offset from the sync signal.

RF channels settings are only available on EDGE VR



You must be in "Bootloader Mode" so that the EDGE™ RF is recognized by the software. To do this, once the USB/µUSB cable is connected to the computer, press and hold the ON/OFF button for 3 seconds.

8

10. REGULATIONS



European Union - Disposal information :

This symbol means that according to local laws and regulations your product should be disposed of separately from household waste. When this product reaches the end of its life, take it to a collection point designated by local authorities. Some collection points accept products for free. The separate collection and recycling of your product at the time of disposal will help conserve natural resources and ensure that it is recycled in a manner that protects human health and the environment.
- This Class B digital apparatus complies with Canadian ICES-003.

FCC Compliance Statement :

This device complies with part 15 of the FCC Rules. Operation is subject to the following two conditions: (1) this device may not cause harmful interference, and (2) this device must accept any interference received, including interferences that may cause undesired operation.

CE Certification

This device complies with CE Certification.

Electrical Safety (IEC 60950-1)

This device complies with IEC 60950-1

11. MORE INFORMATION AND CONTACTS

For more information, please contact Volfoni.
support@volfon.com
logistics@volfon.com
www.volfoni.com

Distributed in France by VOLFONI SAS

29 rue Jean Jacques Rousseau 75001 Paris, France

Distributed in Americas by VOLFONI Inc.

3450, Cahuenga Bd West, Unit 504, Los Angeles, CA90068, USA

Distributed in Germany by VOLFONI GmbH

ErgieBereisstraße 38, 80335 München, GERMANY

Distributed in Spain by VOLFONI Iberia, S.L.

4, Ronda Guglielmo Marconi, 46980 Paterna (Valencia), Spain

Distributed in the UK by VOLFONI Ltd

90 Long Acre, Covent garden, WC2E 9RZ, London, United Kingdom

Distributed in China by VOLFONI Ltd

2101, Tower One, Lippo Center, 89, Queensway, Hong Kong

11