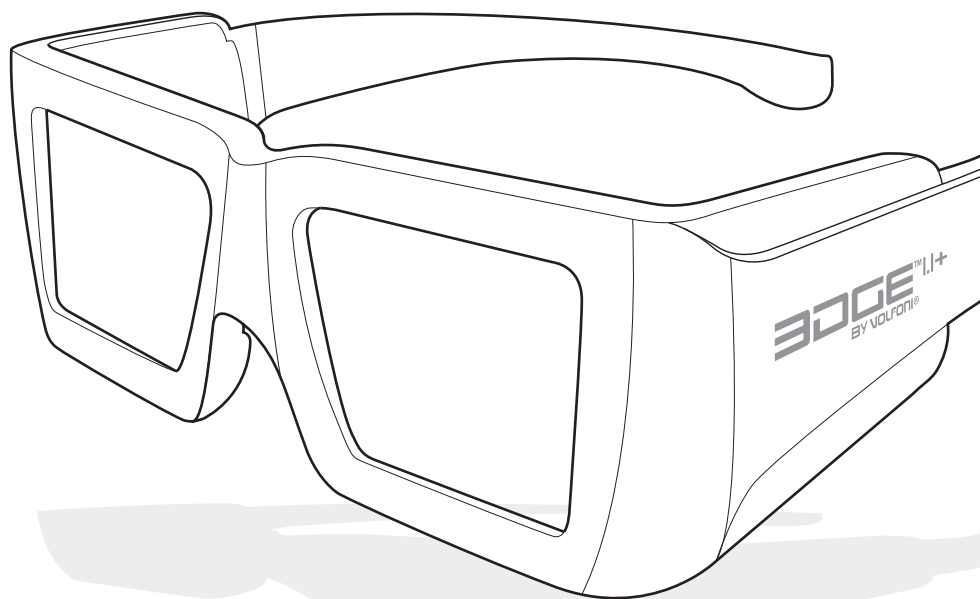


# EDGE™ I.I+

## BY VOLFONI®

### User Manual

## DLP®-Link™ 3D GLASSES



MUV110062-VTR2 EDGE™ I.I+ - English User Manual

**VOLFONI®**  
CREATIVE 3D TECHNOLOGY



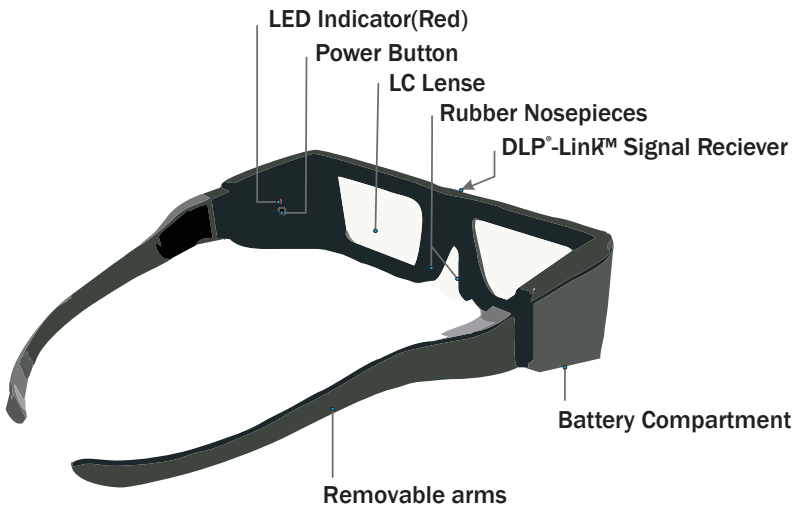
# OVERVIEW

Volfoni EDGE™ 1.1+ DLP®-Link™ 3D Glasses can only be used with DLP®-Link™ 3D ready TV Sets and DLP®-Link™ Projectors.

## Characteristics

- Authorized DLP®-Link™ communication
- Rubber nosepiece
- Stylish and rugged
- Unbeatable receiving angle
- Disposable battery (CR2032)
- Optimal circuit layout
- CE certified

## Product Features



## **What is required for a DLP®-Link™ 3D system**

- 3D Contents (3D movies, Games etc )
- 3D Playback Device (3D Ready PC, Blu-ray Player, 3D TVs...)
- 3D Playback Software (required when viewing 3D movies on 3D ready PC)
- DLP®-Link™ 3D Display (DLP®-Link™ 3D Ready Projectors/TV sets)
- DLP®-Link™ 3D Glasses

# HOW TO USE THE 3D GLASSES

Set your playback device to 3D, press the power button to turn on the glasses.

Now you are ready to enjoy vivid 3D content.

## **Turning ON the Glasses:**

Press the Power Button once. Red LED is on for 1.5 seconds and LC lenses will then turn black.

## **Turning OFF the Glasses:**

Hold the Power Button for 1.5 seconds, and red LED and LC Lenses will blink three times.

*\* **Auto OFF:** The Glasses will turn off automatically in five minutes in absence of DLP®-Link™ signal. Red LED and LC Lenses will blink three times.*

## **Low Battery Warning:**

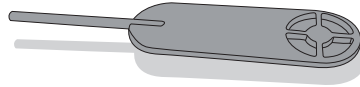
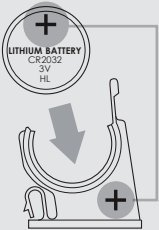
When the battery of your glasses is low, the red LED blinks five times in once per second when the glasses are turned on. Then the red LED blinks continuously. Please see next page to know how to change the battery.

## BATTERY REPLACEMENT

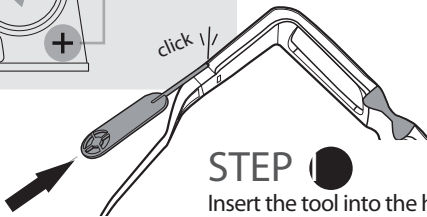
To open the battery encasement on the right arm of the glasses:

- Use an instrument such as the Volfoni's battery tool, a paper clip or a prong.
- Put the glasses on a desk/table as it will be more convenient and easy.
- Find the small hole on the right arm of the glasses, where the arm connects with the battery encasement. **1 2**
- Put the prong inside and when you hear a "click," you can pop open the battery encasement. **3**

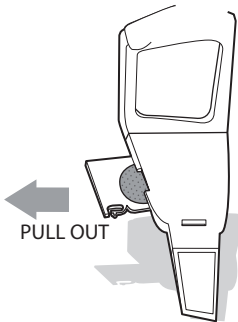
Make sure you install the battery in the right position.



**BATTERY TOOL**  
to unlock the battery tray

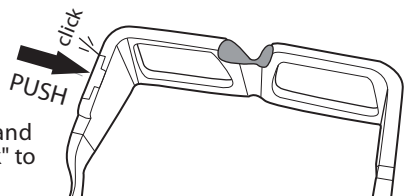


**STEP 1**  
Insert the tool into the hole in the under right side of glasses until you hear the "click".



**STEP 2**  
Pull towards you with your nail to remove the battery encasement.

**STEP 3**  
Reinsert the battery and push to hear the "click" to lock it.



*Note: Please, make sure that there is no obstacle in front of the IR capter during the 3D projection.*

*Note: When the battery has less than three hours remaining, the lenses will flash once a second to indicate that you must change the battery. It is recommended to check the battery life before distributing to viewers.*

*These parameters are for information purpose only. They may be adapted if necessary.*

Type of liquid crystal	Twisted Nematic
Fall time	0.2 ms
Rise time	1.8 ms
Contrast	1:200 (no ghosting)
Transmission in the clear state	34%
Residual light	16,5%
Chromaticity	Color correction not mandatory
Sync operation	DLP®-Link™ Signal
Weight	56 grs (less than 2 ounces)
Battery	Disposable
Battery type	CR2032
Autonomy	50 hrs
Working temperature	0°C to 40°C
Storage temperature	-10°C to 75°C

**Sync at all frame rates up to 144Hz (triple flash)**

## **Warning**

Before using the glasses, read the user's guide and following warnings. Using glasses improperly may result in health-related complications.

## **Warning – No Object Nearby**

Involuntary movement or surprised reaction result from watching certain 3D video. It might be dangerous for surrounding objects or viewers.

## **Caution**

1. The glasses are designed to view 3D contents only. Do not use the glasses as general eyewear, UV protector, reading glasses.
2. The glasses are powered by CR2032 type lithium-manganese dioxide battery. The battery should be replaced with a same or equivalent type, and should be installed in correct polarity.
3. Hold the glasses by the frame, keep your fingers away from the lenses in order to avoid fingerprints and scratches.
4. Store the glasses in a dry and clean place in a standard indoor temperature. Extreme temperature may cause product malfunction and reduce battery life.
5. Do not apply force to the glasses. The LC lenses may break if the glasses are rotated, twisted or bended.
6. Do not disassemble, repair or modify the glasses by yourself.
7. Do not use the glasses if there is any sign of cracked lenses or exposed wiring.
8. Certain light source and fluorescent light may cause lenses flicker, please turn off the light source when using or storing.
9. Clean the glasses with lint free, dry and clean soft cloth, shake off any dust before cleaning.

## **Warning – Pregnant women and young children should not use these glasses.**

*The glasses are not designed for pregnant women and children under age of five. Those people are more likely experience after-effect when they watch 3D content.*

## **Warning – Choking Hazard**

*Keep the glasses out of reach of small children.*

## **Warning – Epilepsy and Seizures**

Some individuals may experience seizures or lose consciousness momentarily when exposed to certain flashing lights and patterns that may appear in television, PC pictures or video games. Even people who have no history of seizures or epilepsy may have an undiagnosed condition. If you or anyone in your family has experienced symptoms linked to a seizure condition, including experiencing seizures or a loss of awareness, consult your physician before viewing 3D media. We recommend that anyone who experienced following symptoms should discontinue use it immediately. Symptoms may include, among others:

- 1) Lightheadedness
- 2) Altered vision
- 3) Eye or face twitching
- 4) Confusion
- 5) Disorientation
- 6) Loss of awareness
- 7) Involuntary movements
- 8) Convulsions
- 9) Nausea

Parents should monitor and ask their children about above symptoms.

## **Warning – Eye Fatigue**

Some individuals have reported dizziness, headaches, or eye fatigue as a result of viewing media in 3D. Stop using if you or your child experience any of these conditions. Take a rest and consult a doctor if eye fatigue continued.

You may be able to reduce the effect of eye fatigue by taking the following precautions:

- >> Do not watch 3D content when you are fatigued or ill.
- >> Do not use the 3D glasses for extended periods of time.
- >> Use the 3D glasses after reducing the depth setting.
- >> Use the 3D glasses with a refresh rate of 100Hz or higher.



# ACCESSORIES (Sold Separately)



Battery Tool



Battery Encasement

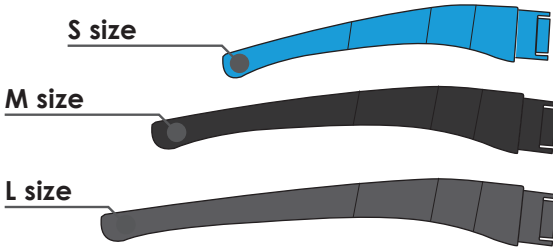


Antibacterial Cleaning Wipes



Batteries (CR2032)

## Adaptable arms



**VOLFONI SAS**

29, rue Jean Jacques Rousseau  
75001 Paris  
France

**VOLFONI GmbH**

Erzgießereistraße 38  
80335 München  
Germany

**VOLFONI Ltd**

21, Tower one  
Lippo center 89,  
Queensway  
Hong-Kong

**VOLFONI Inc**

3450, Cahuenga Bd West.  
UNIT 504  
Los Angeles, CA, 90068  
USA

**VOLFONI Ltd.**

90 Long Acre  
Covent Garden  
London  
WC2E 9RZ  
UK

**VOLFONI Iberia, S.L.**

Ronda Guglielmo Marconi, 4  
46980 Paterna (Valencia)  
Spain

support@volfoni.com  
contact@volfoni.com

[www.volfoni.com](http://www.volfoni.com)